



# Partners for Development

Annual Report | 2014



# Table of Contents

Letter from the Board Chair	3
About Us	4
Success Story	5
Programming and Integration	
Health	6
Agriculture	12
Economic Growth	15
Anne Johnson Memorial Scholarship Fund	18
Scholarship Donors	20
Local Partners	21
Financials	22
Donors	23

Photo: Mrs. Phoy Kim Sing, Vegetable farmer and microfinance client in Cambodia

Cover Photo: Paddy Green Sunset in Cambodia

# Letter from the Board Chair

Dear Friends and Colleagues,

It is with pleasure that I introduce the information-packed 2014 Partners for Development (PfD) Annual Report. All of PfD’s work is accomplished with attention to value for money and efficiency in achieving results. And tremendous heart!

Our commitment to helping those most in need through community partnerships and integrated, multi-sectoral approaches leads us to our next phase of challenges - meeting the Sustainable Development Goals (SDGs).

Throughout this report in each of our technical focus areas (Health, Agriculture and Economic Growth) you’ll see examples of integrated programming and partnership. Partnership is what PfD is all about. Our concept of partnership includes our clients, local communities and community-based organizations, other NGOs, governments, and our donors.

I joined the Board of PfD in 1999 when we were still working in post-war Bosnia and Herzegovina, and in the most difficult provinces of post-crisis Cambodia. Of course, we also worked, and continue to work, in difficult areas of Nigeria. I am continually impressed by the businesslike and no-fuss way PfD works in the “hard places.”

I challenge you, the reader, to continue and redouble your commitment to partnering with PfD going forward or to become a partner today.

Sincerely,



Nancy Pendarvis Harris  
PfD Board Chair



# About Us

## Mission and Vision

PfD is a 501(c)3 not-for-profit organization whose employees and volunteers work in partnership with local and international groups to improve quality of life of vulnerable people in underserved communities.

We envision a more just, peaceful, and environmentally sustainable world. We also seek to empower people through training, education, and access to resources to help create more vibrant and resilient communities with more accountable leadership.

Photo: UK Department for International Development Saving lives via Wikimedia Commons

# Success Story: Meet Mrs. Osarugue

Meet Elizabeth Osarugue, a mother of five who manages a small shop selling general goods in Edo State, Nigeria.

Mrs. Osarugue's life goal is to support her children and provide a quality education for them. Her strong desire to fulfill this goal led her to Lift Above Poverty (LAPO), one of PfD's micro-finance implementing partners in Nigeria. Now a leader in the PfD Better Life micro-credit group, Mrs. Osarugue has access to finance and support from PfD. This support has enabled her to expand her business and achieve her goals. Mrs. Osarugue has been able to secure a stable future for her family by investing in her children's education, purchasing property, and accessing quality health care.

Access to credit is important, but it alone will not lift families out of poverty. Therefore, working together, LAPO and PfD have created an integrated approach to microfinance by offering additional support to women like Mrs. Osarugue including, health and education support for their families. Mrs. Osarugue has found the integrated health empowerment to be invaluable as it has helped reduce the stigma of HIV/AIDS in her community.

Mrs. Osarugue explained, "I have been very fortunate because PfD and LAPO have taught me so much about HIV/AIDS and reproductive health. Before now, I always ran away from infected persons and feel that they or their partners have been unfaithful. Now I know sex is just one of the modes of transmission; other means which we least expect exist; like shared weave-on needles."



Photo: Mrs. Elizabeth Osarugue expands her business in Nigeria



# Health



Improving health outcomes and ensuring access to quality health services is essential for growth. PfD's health programming provides local solutions to complex health disparities across the developing world. Our programs in 2014 focused on reproductive, maternal, newborn and child health, water hygiene and sanitation (WASH), HIV/AIDs, malaria prevention and control, and health system strengthening. Below are highlights from PfD's work in health in 2014.

## Reproductive Health

Nigeria has one of the highest rates of maternal and child mortality in the world, with the rural states in northern Nigeria most severely affected. With funding from USAID and in partnership with John Snow Inc.'s Targeted States High Impact Program (TSHIP), PfD implemented a program in northern Nigeria, which reduced maternal and infant mortality, worked to strengthen community engagement, improved the

quality of local health services, and increased the effectiveness of health systems.

**In 2014 through PfD's interventions, 135,974 women in Northern Nigeria received health education counseling.**

PfD has promoted community involvement and participation through village and ward development committees with the active participation of trained health facility staff and community based health volunteers. This approach has strengthened the linkage between the community and the ward health facilities on issues of maternal and newborn child health, family planning/reproductive health promotion and practice, which has resulted in an increase in completed referrals of women to health care facilities by 74% in 2014.

In 2014, PfD's health programming in Nigeria resulted in:

**114,039**  
women attending  
least one antenatal  
care visit

Treatment of  
**13,747**  
cases of childhood  
diarrhea

**57,067**  
women receiving  
intermittent  
preventive treatment  
(IPT) for malaria in  
prenatal care

**37,528**  
family planning  
counseling sessions  
with men and women  
of reproductive age

Photo: Women walking with children to village health clinic in Nigeria



## Malaria Elimination, Control and Prevention

Funded by The Global Fund to Fight AIDS, Tuberculosis, and Malaria, PfD's Malaria Control Program is building on over two decades of experience delivering programming to the most underserved people in remote areas of Cambodia. PfD's goal is to move towards elimination of malaria across Cambodia with special efforts to contain multi-drug resistant malaria within mobile and migrant populations (MMP). PfD uses targeted programming to reach MMP, who, due to their frequent work in plantation and forest areas (a hotbed for mosquitos) and their movement throughout the region, are more susceptible to multi-drug resistant malaria (MDR). PfD provides malaria case management and health education training to health volunteers who provide testing and treatment to fellow workers with malaria. PfD's innovative forest package pilot project also helped to prevent malaria in the MMP population by using a voucher system to distribute malaria prevention forest packages.

Throughout 2014, PfD continued to increase commu-

nity awareness of malaria by offering trainings for Village Health Volunteers on malaria health education and training for school teachers on PfD's child-to-child (CtC) methodology. PfD's efforts are far reaching: community-based health education video shows have reached 38,932 individuals from 320 communities.

**95% of children who received the Child-to-Child curriculum passed along information on malaria prevention to their family and the community.**

Working with the Institute Pasteur of Cambodia, the London School of Hygiene and Tropical Medicine, and the National Center for Malaria and Dengue, PfD implemented the Regional Artemisinin Initiative (RAI) to contain the spread of MDR in the Greater Mekong Sub-Region. PfD provided training on how to collect and transport blood samples, established an Early Warning System in a Kratié Province hospital and health centers, and created and conducted a survey focusing on the perception and behaviors, especially among mobile and migrant workers, around malaria transmission, prevention and treatment.



## In 2014, PfD's malaria control activities reached:

**57,053**  
individuals with  
community-based  
malaria health  
education

**182** mobile and  
plantation Malaria  
Workers, who in turn  
tested **2,646**  
patients suspected of  
having malaria and  
treated **528**  
patients diagnosed with  
malaria

**439**  
Village Health  
Volunteers focused on  
malaria and  
**60**  
new Village Health  
Volunteers trained on  
malaria health education

Photo: Road to access mobile and migrant populations in Cambodia



## Water, Sanitation and Hygiene (WASH)

Over 45% of Nigeria's population lacks access to safe drinking water and 60% of the population does not have access to improved sanitation facilities. PfD, with support from UNICEF, began setting up Community Water, Sanitation and Hygiene Committees (WASHCOM) in Delta, Edo and Ekiti States in Nigeria. The implementation strategy promotes sustainability and ownership as it is demand driven and works to build capacity of WASHCOM and will serve as a platform for integrated programming going forward.

The program enables local communities to explore and mobilize their local resources to meet self-identified WASH needs. The program empowers the communities to monitor and evaluate interventions, generate discussions and make informed decisions.



Photo: Children collecting water from a water facility in a community which is supported the EU/UNICEF and PFD partnership



### Integrating Economic Growth

**In Northern Nigeria, PfD linked community participation, quality service delivery and capacity building with promotion and practice of income generating activities and women's economic empowerment through support of groups that can mobilize resources and access micro loans for small businesses.**



### Integrating Peacebuilding

**By creating and building Water, Sanitation and Hygiene Committees (WASHCOM), PfD is setting the foundation for integrated programming. WASHCOM open the door to opportunities and interaction among communities, which not only improves WASH programming but also contributes to strengthening social bonds, peace building, and economic growth.**





# Agriculture



Increase in population, natural resources depletion, and a changing climate have caused food prices to rise and agricultural productivity to become strained. Those most affected are small-holder farmers. Three-quarters of the world's poorest people get their food and income by farming small plots of land about the size of a football field (Gates Foundation). PfD has worked for decades in agriculture, veterinary and livestock support, food security and nutrition. Below are highlights from PfD's work in agriculture in 2014.

## Agricultural Development

The USDA-funded Growing Resources for Enhanced Agricultural Enterprises and Nutrition (GREEN) project has continued to make a positive impact across six southern departments of Benin. GREEN works to improve the livelihoods of vegetable farmers by addressing key challenges.

The GREEN model includes: training farmers on improved production, marketing skills, value chain, and post-harvest techniques; increasing access to market information; and increasing access to credit. PfD works in partnership with local farmer associations to implement the project.

In 2014, technical extensions and trainings covered topics such as water management and irrigation, post-harvest processing techniques to reduce loss, and how to properly apply chemical fertilizers to mitigate health and environmental impacts. GREEN trainings are practical, hands-on, based on farmers' requests, and include innovations such as a joint workshop for vegetable producers and market suppliers.

GREEN's SMS based Vegetable Market Information System (VMIS) delivers crucial market information directly to

**More than 6,000 farmers implemented improved techniques and innovations as a result of extension visits by PfD and local partners.**

farmers in their fields. This information enables farmers to know what crops and markets bring the best prices, and allows farmers to plan production accordingly. In 2014, more than 45,000 text messages were sent each month with prices of agricultural goods in key markets to over 2,000 farmers enrolled in the program.



Photo: A Beninese farmer learns to diversify crops to increase profits through the GREEN project.

## 2014 GREEN Results

### Outcomes

**155%**  
increase in  
production

**220%**  
increase in  
farmers'  
net revenue

**13,000**  
new  
fulltime &  
seasonal jobs  
created in  
agriculture

### Outputs



12,000 Days of training



Over 45,000 SMS messages  
through VMIS per month



Over 1,500 loans distributed  
to farmers





## Integrating Health

Promoting health and hygiene is integrated into GREEN training sessions, where farmers are taught how to use protective gear when spraying fields with pesticide or fertilizer. The farmers are also taught the dietary value of vegetables, and how to conserve the nutrients. In addition, using the VMIS, SMS messages are sent to farmers, enabling them to share the information about the nutritional value of eating vegetables with their families and communities.



## Integrating Economic Growth

The GREEN model of agro-enterprise development links its interventions synergistically: loans are contingent upon completing trainings and participating in the VMIS, as well as submitting a PfD approved business plan to microfinance agencies. This ensures farmers are able to use their loans efficiently and effectively to increase their revenue and their livelihood. With these loans, farmers have established irrigation systems, expanded farms, and bought inputs such as fertilizer, new seed stock, and equipment.



## Integrating Sustainability

The GREEN Project has integrated water resource management by training farmers in irrigation techniques and providing the credit necessary to implement the new systems.

In 2014 GREEN laid the foundation to test new farm technologies that use renewable energy, such as solar powered and drip irrigation systems.

Photo: GREEN farmer's cabbage field in Benin

# Economic Growth



By listening to local communities and empowering them to lift themselves out of poverty, the door to improved livelihoods and sustainable economic growth is opened. One path to economic growth is integrated microfinance. Micro-finance alone is not the once-thought silver bullet to development, but when combined with other approaches it can be a powerful tool to empower communities. PfD has worked through local micro-finance implementing organizations to reach thousands of people. Below are highlights from PfD's work in economic growth in 2014.

## Microfinance

By working with local microfinance organizations, PfD is better able to reach underserved people in rural areas. Insight gained from working on the ground with local partners, combined with funding and organizational capacity building from PfD have enabled the local microfinance organizations to better integrate business training and health education into the lending process. PfD works with partners to form microfinance groups which are then used as a platform for integrated programming.



Photo: With new access to markets, women are significantly increasing their profits through GREEN in Benin

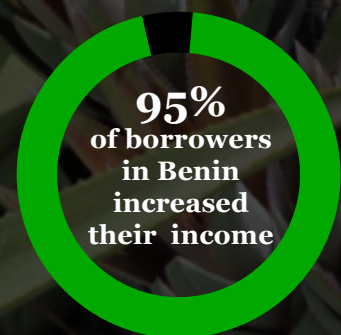




## Integrating Agriculture

Around the globe, smallholder farmers have difficulty accessing credit due to the risk inherent in agricultural production. PfD has encouraged its partner organizations to lend to farmers.

In 2014, 32% of the loans in Nigeria and 100% of loans in Cambodia and Benin were distributed to farmers. With access to credit, farmers have more flexibility to implement new techniques and innovations which can increase their production and income.



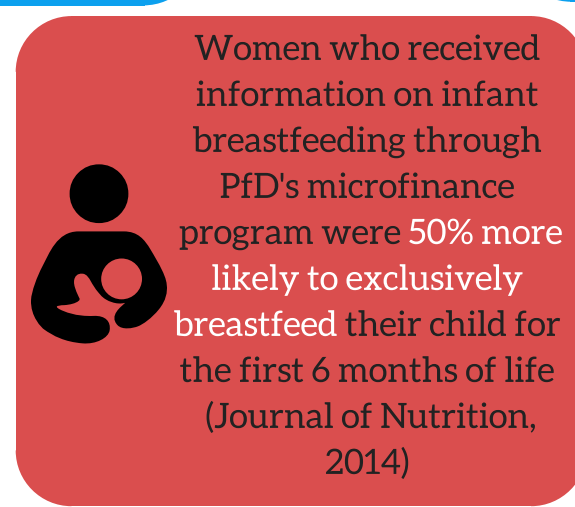
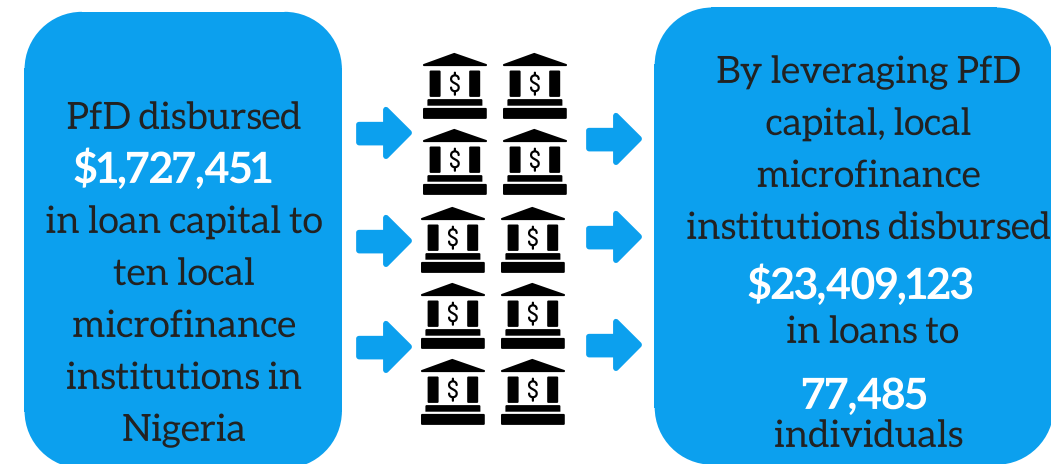
## Integrating Health

From 2009-2014, PfD implemented a microfinance program with a David & Lucile Packard Foundation Program Related Investment (PRI) loan in Nigeria. PfD partnered with local microfinance institutions to distribute loans across Nigeria and with the support of a grant PfD disseminated Reproductive Health and Family Planning (RH/FP) information to women of reproductive age through microfinance borrower groups. PfD provided business skills training and technical assistance to agricultural loan recipients, in addition to providing reproductive health messages and linking borrowers to health facilities.

Staff of PfD's MFI partners noted that these additional business development services increased borrowers' ability to manage their businesses and therefore reduce the risk of loan default.



From 2009-2014, utilizing a PRI loan from the Packard Foundation:





# Anne Johnson Memorial Scholarship Fund

## Girls' Education

Nigeria has made strides in recent years in educating its children; however, according to the World Economic Forum 2014 Global Gender Gap Report, gender disparities remain with only 77 girls attend secondary school for every 100 boys. The difference is even greater in Northern Nigeria where girls are often expected to work rather than continue beyond primary school.

Anne Johnson (1957-2013) was a dedicated PfD team member for over 20 years; having worked both for the US-based office as well as PfD's Nigeria office as Country Program Director. Anne was extremely passionate about girls' education in Nigeria and therefore to honor Anne, PfD established the Anne Johnson Memorial Scholarship Fund (AJMSF). The strong correlation between education and socio-economic status of women globally makes this especially relevant to PfD's mission.



Photo: Scholarship recipients in Nigeria

# Meet Tonbor: A Scholarship Awardee

*"I thank PFD and LAPO for giving me the opportunity to attend a high standard secondary school. I also promise to keep improving in my academic performance and be a good student." – Tonbor Inddy*

The impact of this scholarship for families like Tonbor's is essential. Upon receiving the scholarship, Mrs. Inddy thanked PfD and LAPO for the assistance, "this scholarship award has helped my husband and me reduce the burden of educating our daughter. I pray that the AJMSF grows and can be extended to other children."

Tonbor aspires to continue her education and study medicine at university. With the AJMSF scholarship Tonbor can continue to pursue her dream.

Tonbor Inddy, age 15, received a scholarship to attend secondary school. Tonbor is the fourth of five children, which made it challenging for her family to afford to pay all of the school fees.



Photo: Mrs. Inddy and her daughter Tonbor at the Scholarship Ceremony



# Scholarship Donors

The AJMSF has been funded by donations from friends and family members of Anne Johnson as well as an institutional gift from The National Cooperative Bank (NCB). With these contributions, PFD will be able to continue to fund the Anne Johnson Memorial Scholarship Fund and enable even more girls to continue their education.

## Donors to Anne Johnson Memorial Scholarship Fund:

Alexander Schneider Foundation, Jenny Altshuler, Marc Benamou, Hollie Bowen & E. Paul Love, Jr., Edith M. Carey & Jane Newton, Jennifer Carr & William Walsh, Christine M. Cervenak, Karey Christ-Janer, Geoffrey F.S. Dolman, Patricia Dolman, Sophie Dolman, Jane Eesley, Valerie Flax, The Marlboro Historical Society & Cathy Fuller, Christiana Gianopulous, Linda Giles, Craig Hammond & Elizabeth Vick, Nancy Harris, Carolyn & Alden Hart, Kim Hasegawa, Sarah Jackson, Linda Jessop, Rosemary Jessop, Dorothy Johnson, Homer & Allison Johnson, Marianne & Relph Johnson, Philip Johansson, Emily Mason, Kahn/Fidelity Charitable, Martha & Bill Kelly, Jane & William King, Deirdre LaPin, Anne-Marie Uebbing, Juliet & Jack Marrkand, Andrea McAuslan, Alefia Merchant, Joel Montaque, Brian Mooney, J.A. Murphy, National Cooperative Bank, Frederick & Mary O'Brien, Stephen O'Brien, Vincent Oluboyo, Melissa J. Payson, Amy Pofcher, Barbara Pofcher, James D. Pope, Robert Reed, Andrew Reichsman & Catherine Purdie, Diane Roback, Frank Salomon, Susan Sichel, Leland Smith, Pamela Sommers, Charles & Anna Sykes, Hanna Thurber, Sally Vincent, Paul Wamka, Jenny White, Nan Wisher, and Marjorie & Malcolm Wright

# Local Partners in Development

## Nigeria

Lift Above Poverty Organization  
Gerawa Women Multipurpose Cooperative Society  
Women's Empowerment Initiative in Nigeria  
Women Development Association for Self-Sustenance  
Kowanaka Community Development Centre  
Country Women Association of Nigeria  
Family Health Care Initiative  
Project Agape  
Think Microfinance Bank

## Benin

Regional Council of Vegetable Farmers of Mono-Couffo  
Zegional Farmers' Union of Atlantique-Littoral  
Regional Farmers' Union of Oueme-Plateau  
Benin National Microfinance Institution  
ESOKO Telecommunications Services

## Cambodia

Kredit  
Kratie and Koh Kong Provincial Health Department  
Kratie and Koh Kong Provincial Malaria Unit  
Institute Pasteur of Cambodia  
Cambodian National Center for Malaria and Dengue

## Tanzania

Tanzania Home Economics Association (TAHEA)  
CARITAS



# Financials

## Revenue and Support

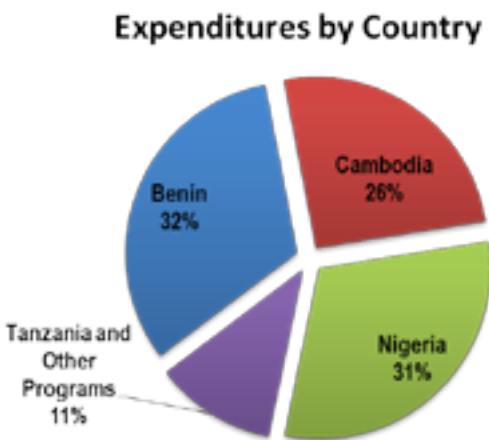
Grants|\$2,119,414  
Contributions | \$44,242  
Investment & Interest |\$304,857  
Other | \$47,330  
Total Revenue and Support |\$2,515,843

## Expenses

Programs  
Benin|\$777,022  
Cambodia | \$608,914  
Nigeria | \$734,373  
Tanzania & Other Programs | \$277,756  
Total Programming |\$2,398,065  
General and Administrative |\$358,722

## Other Items

Exchange Rate (Loss) Gain |(\$202,641)  
Changes in Net Assets| \$(443,585)  
Net Assets in Beginning of Year |\$5,247,245  
Net Assets in End of Year |\$4,803,660



# Donors

## Institutional Donors

The Benevity Community Impact  
Chemonics International  
Combined Federal Campaign  
David & Lucile Packard Foundation  
Global Fund to Fight AIDS, Tuberculosis and Malaria  
JSI Research & Training Institute, Inc.  
London School of Hygiene and Tropical Medicine  
Marrkand/Henry Family Fund & Fidelity Charitable  
Nathan Cummings Foundation  
United Nations Children’s Fund (UNICEF)  
United Nations Office for Project Services (UNOPS)  
United States Agency for International Development (USAID)  
United States Department of Agriculture (USDA)

## Individual Donors

Arthur Elliott Berger, Anncha Briggs, Michael Chommie, Robert Durning Jr., Donna Ellis, John Fields, Steve Hansch, Margaret & James Hanson, Nancy Harris, Veronika Jenke, Terry Kirch, Matha Koster, Deirdre LaPin, Joyce Leader, Jack & Juliet Marrkand, Kim Marrkand & Kathleen Henry, Patricia Marrkand, Jesse Miner, David Montague, Jahan Montague & Alexandra Cach, Ruth Montague, Stephen O’Brien, Scott Otteman, Stockton Ranch, Sean McSweeney, Robert & Catherube Sheridan, Felipe Tejada, Anna Titulaer, Elizabeth Tschoegl, and Lanre Williams-Ayedun





Photo: Kids in Nigeria

Thank you to all of our partners and supporters who continue to donate in order to help us reach vulnerable communities.

Learn more at:



[www.pfd.org](http://www.pfd.org)

CFC #55979

## LOCATIONS

US Headquarters  
8630 Fenton Street  
Suite 613  
Silver Spring, MD  
20910, USA

Nigeria Office  
No. 66 Yaoundé Street  
Wuse Zone 6  
Abuja, Nigeria

Cambodia Office  
No. 26, St. 334  
Sangkat Beoung  
Keng Kang I  
Khan Chomcarmorn  
Phnom Penh, Cambodia

Benin Office  
National Lot No. 1176  
Parcelle K, Haie-Vive  
Cotonou, Benin

Affiliates: Partners Consulting Group, USA | Technologies for Renewable & Efficient Energy, Tanzania  
Initiative for Advancing Livelihoods Solutions, Nigeria