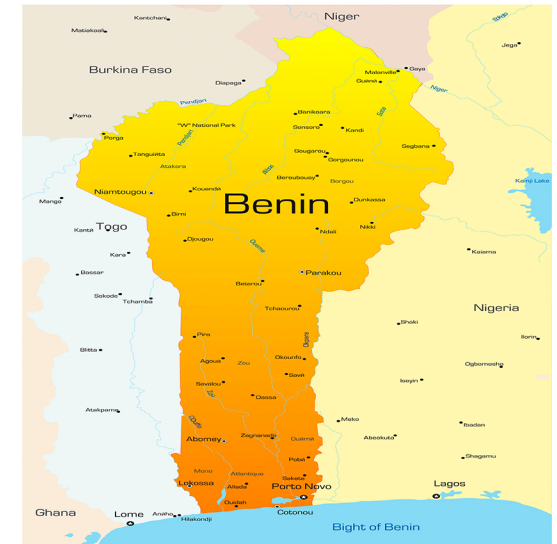




OVERVIEW

In Benin, Partners for Development (PfD) has delivered sustainable solutions to poverty through partnerships with local organization prioritizing local ownership of the development process. In Benin, farmers generally do not have access to market information for their products and often struggle to find customers and good prices for their crops. Since 2011, PfD has been committed to increasing Beninese capacity by breaking down agricultural barriers and improving the local market to further improve the lives of producers and families.

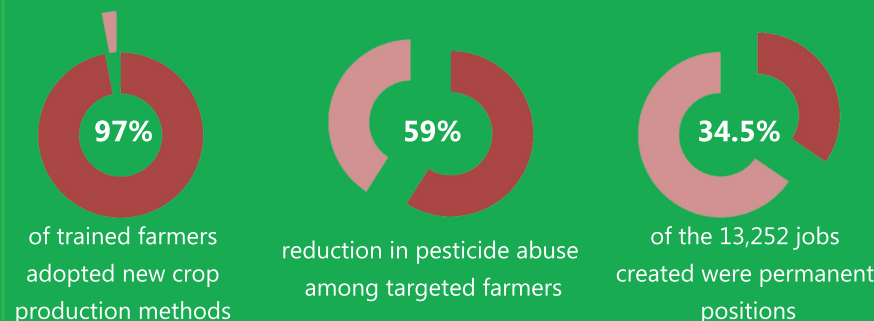


LOCAL SUSTAINABILITY

By working with local partners, PfD has a greater understanding of priority needs and local resources that can help address those needs. By building the capacity of local partners, PfD increases the likelihood that gains will be sustained. PfD works with local partners in design of programs, implementation, and monitoring and evaluation. Local partners include local NGO, community based organizations, faith-based entities, and traditional leadership councils or bodies. In Benin, PfD engages in local partnerships to support small holder farmers and communities.



IMPACT TO DATE



“ [Through PfD’s GREEN Project,] I became autonomous and my own boss, allowing me to earn more than I had in my previous service.”

Richard Adjete Agbevide
Vegetable farm owner in Athiémé, Benin



AGRICULTURAL DEVELOPMENT



HEALTHY COMMUNITIES



ECONOMIC EMPOWERMENT

PfD's is currently strengthening the pineapple value chain at all levels in Benin by working with pineapple farmers, producers' organizations, processors, and exporters through the Pineapple Processing for Export Program (PINEX) project. By increasing access to finance inputs, providing training and capacity building for producers and processors, and increasing infrastructure, market information, and brand recognition, the project will address major challenges in the agricultural sector.

Through the Growing Resources for the Enhanced Agricultural Enterprises (GREEN) project, PfD has integrated programs to provide health education and access to nutritious foods for local Beninese communities. With mass SMS messages on nutrition and hygiene to thousands, accompanied with vegetable preservation and sanitation trainings, PfD is improving the health of children and families in rural areas of Benin.

In six southern states in Benin, PfD is currently working with farmers' associations to train 36,000 agricultural producers' family members on post-harvest handling, improved production techniques and market-driven production enabling farmers to maximize earnings potential. Over the course of five years, horticulture production has already increased by 139% with predictions of continual progress.

MISSION AND VISION

PfD's staff and volunteers work in partnership with local and international groups to improve quality of life for vulnerable people in underserved communities. We envision a more just, peaceful, and environmentally sustainable world, and seek to empower people by increasing their access to training, education, and resources to create more vibrant and resilient communities, with more accountable leadership.



Cynthia Taha
Country Program Director
Lot 1176, Parcelle K, Haie-Vive, Cotonou
Tel: 229 67 00 19 19
Email: cdtaha@gmail.com

Mamie Clarke
Program Development Manager
Tel: +1 301 608 0426 ext.11
Email: MClarke@pfd.org